

884 DECRYPTOR MINI

Quick-Start Guide

CONTENTS

Installing the Software / App
Keyline Cloning Tool

User registration

Recover password

Check the smartphone / tablet
USB-OTG capability

Link to your account

Unlink from your account

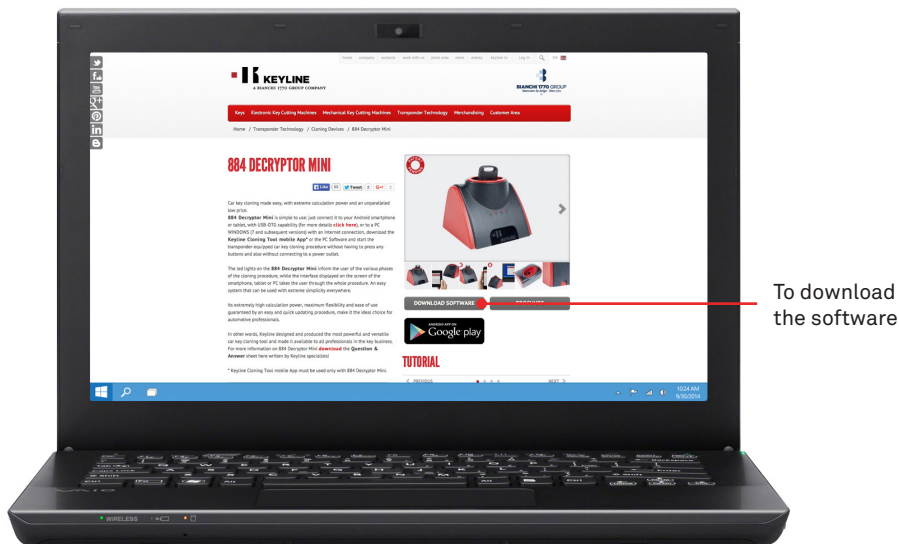


INSTALLING THE SOFTWARE / APP

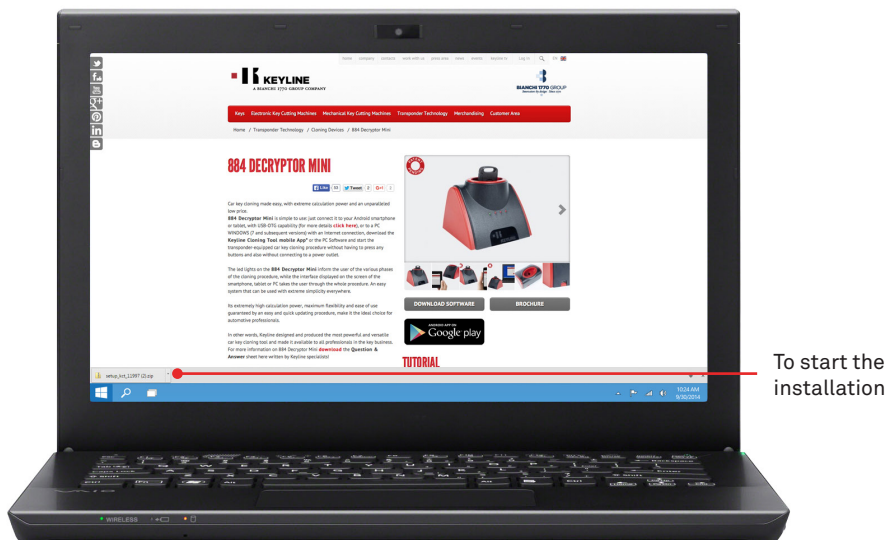
INSTALLING THE SOFTWARE

Procedure:

- a. Access the www.keyline.it or www.keyline-usa.com website, then enter the 884 Decryptor Mini product page and download the software clicking on **DOWNLOAD SOFTWARE**.



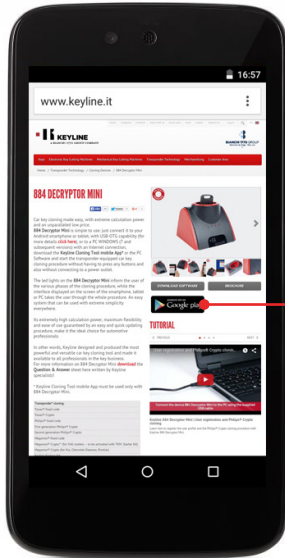
- b. Click twice to start the installation, then follow the instructions that appear in the interface to complete the installation.



INSTALLING THE APP

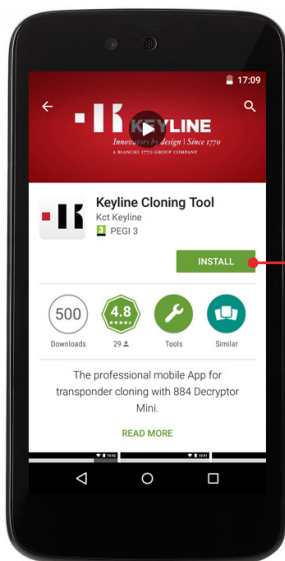
Procedure:

- a. Access the www.keyline.it or www.keyline-usa.com website, then enter the 884 Decryptor Mini product page and access the Google Play Store clicking on the icon.

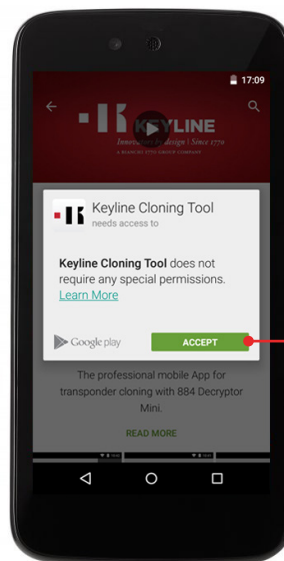


To access the Google Play Store

- b. Press INSTALL, then press ACCEPT.

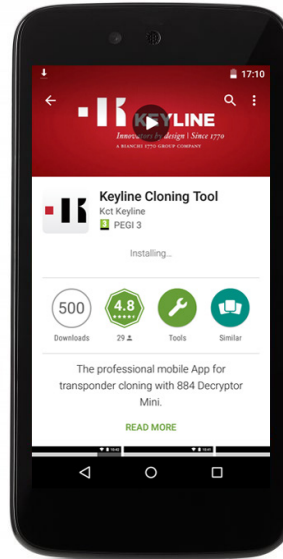
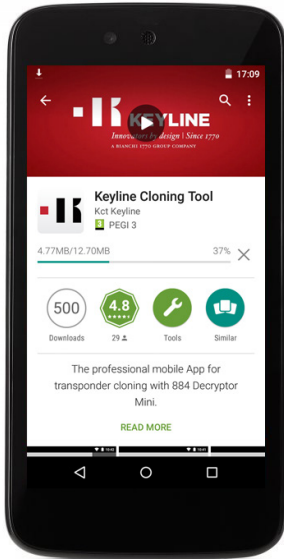


To install the App

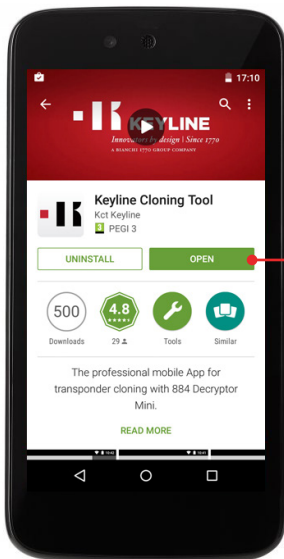


To accept the App conditions

c. Wait for the downloading and installing processes to be completed.



d. After installing the App, press OPEN to launch the App.



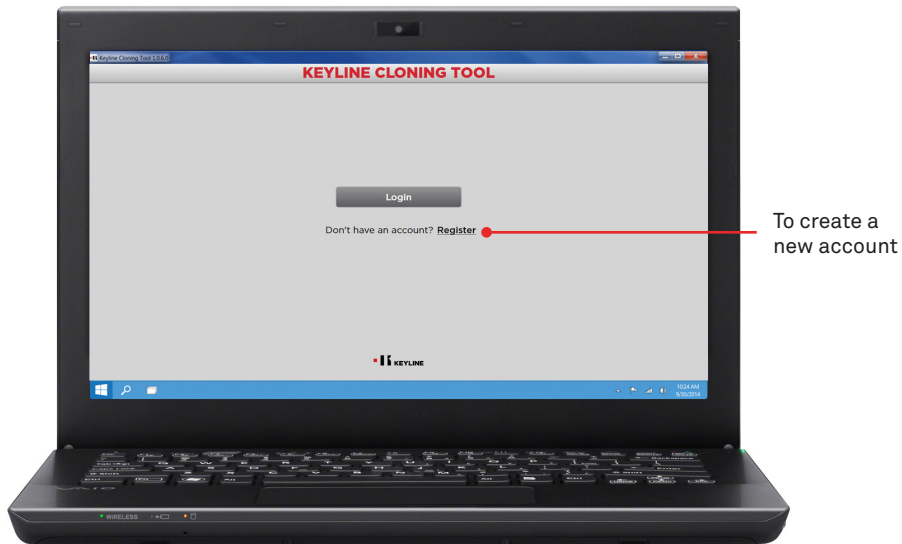
To launch the App

USER REGISTRATION

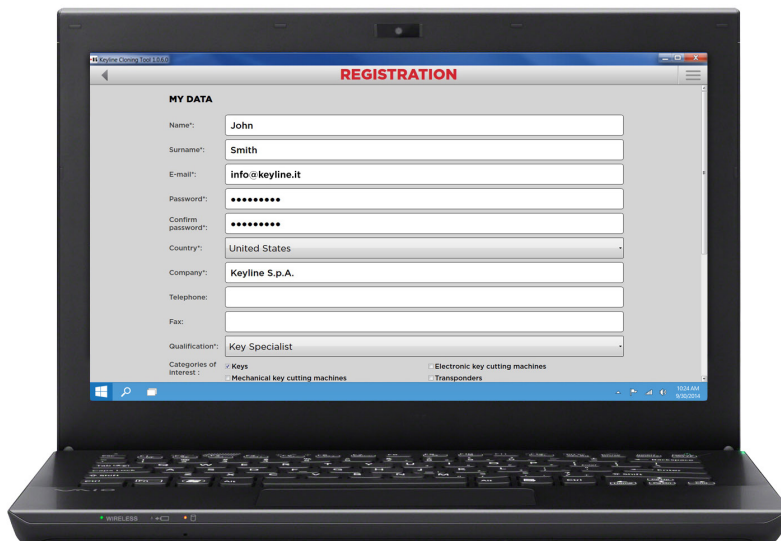
THROUGH THE PC

Procedure:

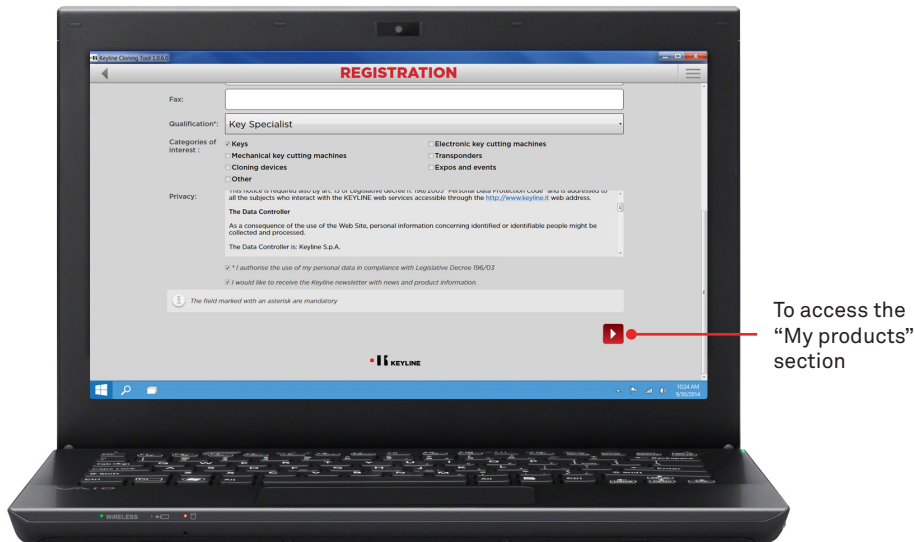
- a. Launch the program and press REGISTER to create a new account.



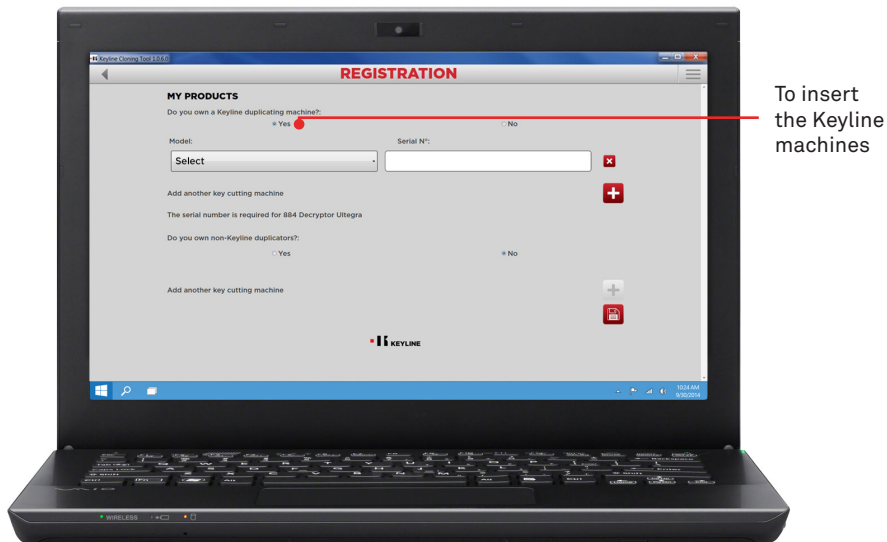
- b. Insert your data



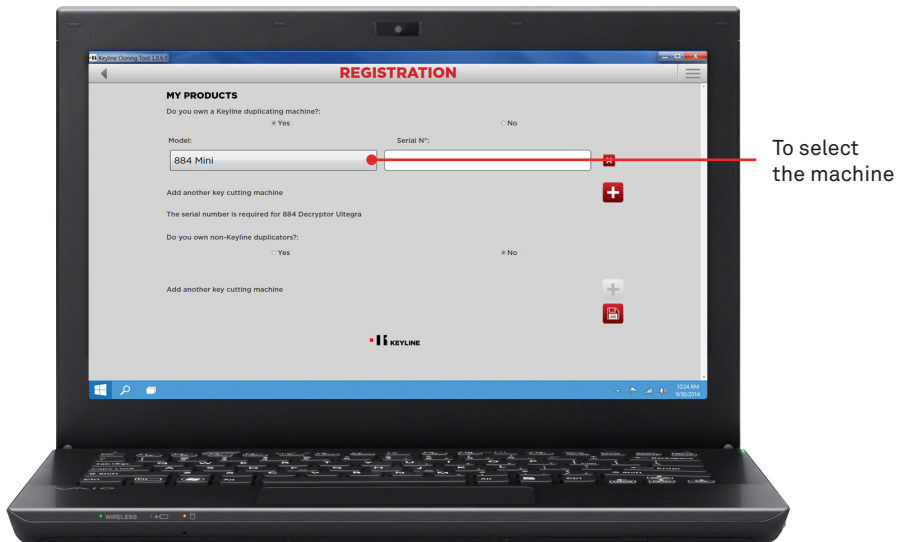
c. Press NEXT to access the “My products” section.



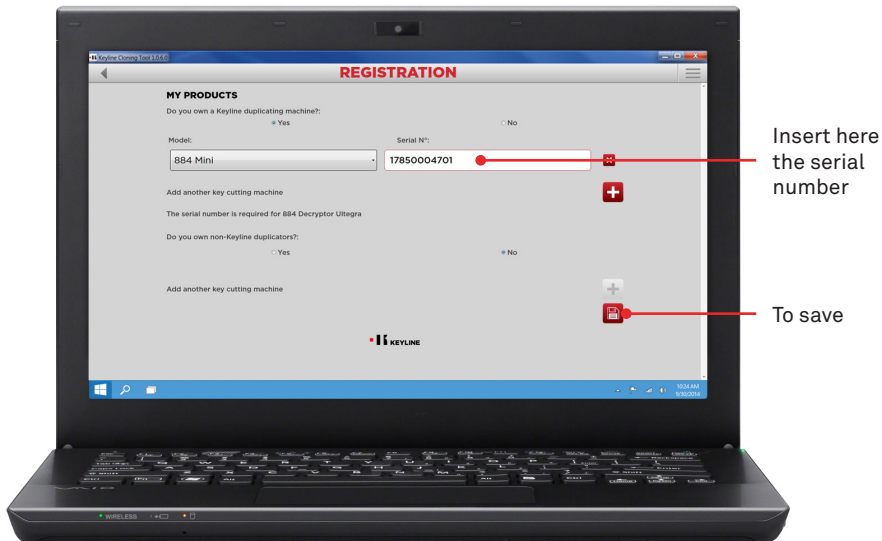
d. Insert your products, selecting YES under the questions “Do you own a Keyline duplicating machine?” and/or “Do you own non-Keyline duplicators?”.



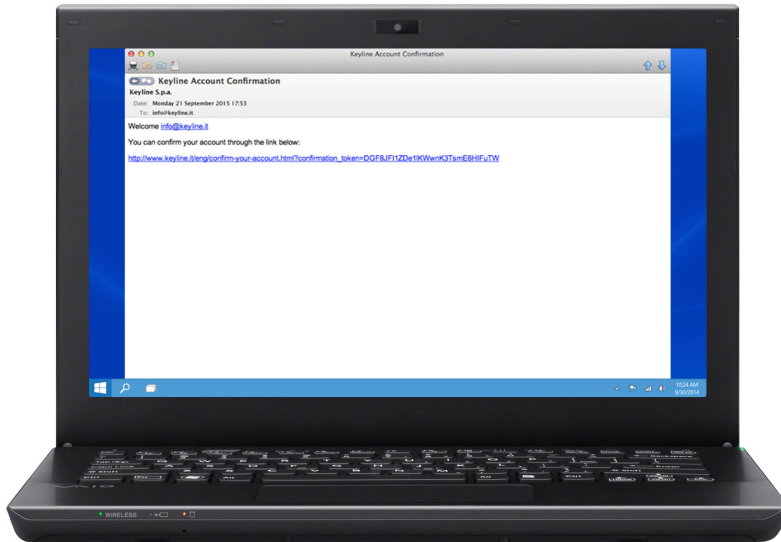
e. Select your machine from the drop-down menu.



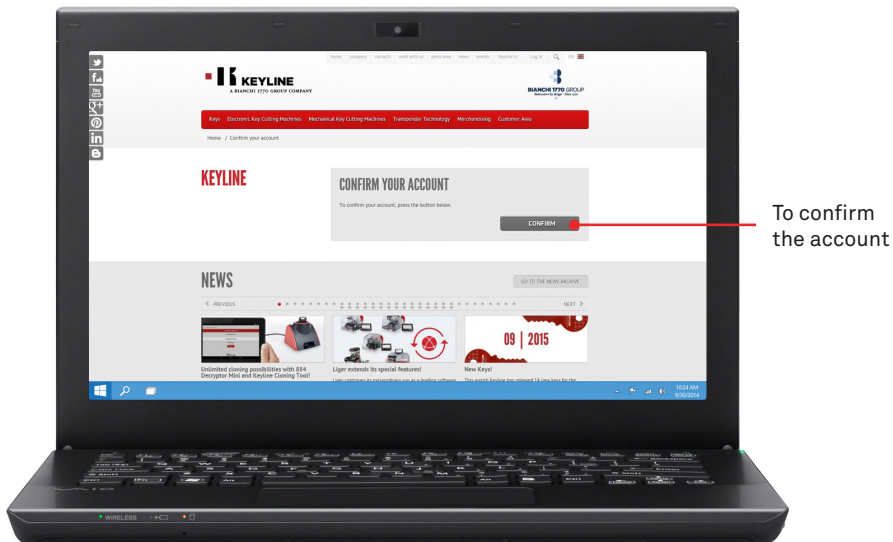
f. Insert the serial number, then click on the floppy disk icon to save the registration.



g. Check your e-mail inbox and select the link that you will receive from Keyline.



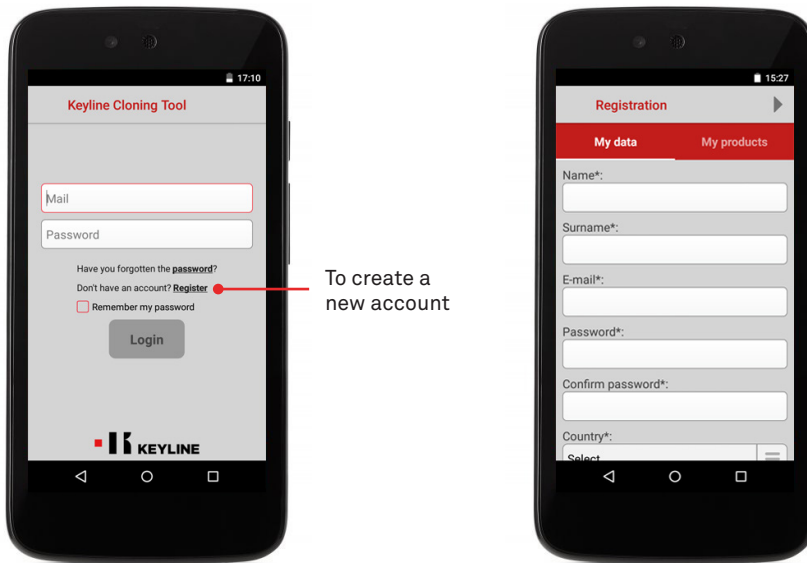
h. Confirm your account.



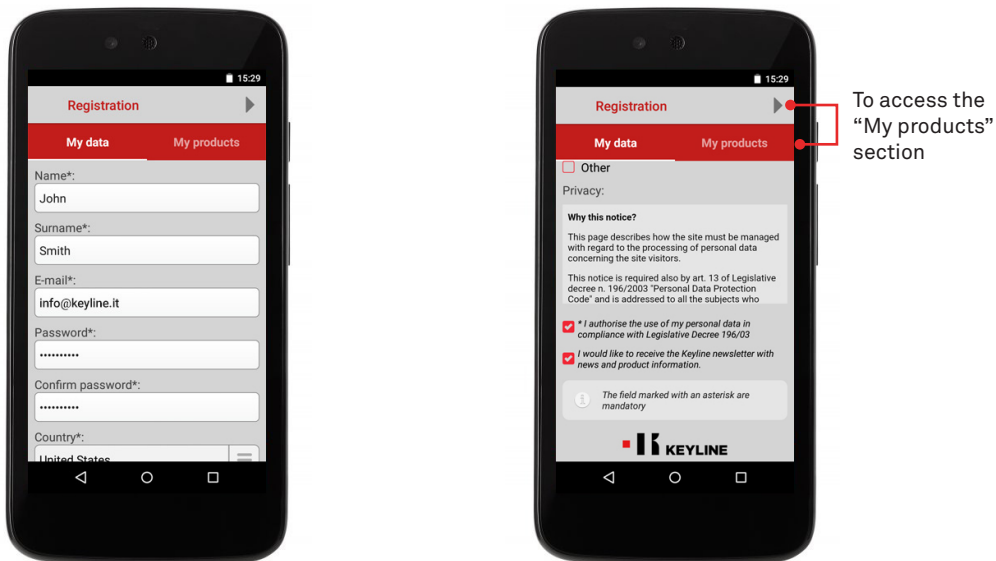
THROUGH THE APP

Procedure:

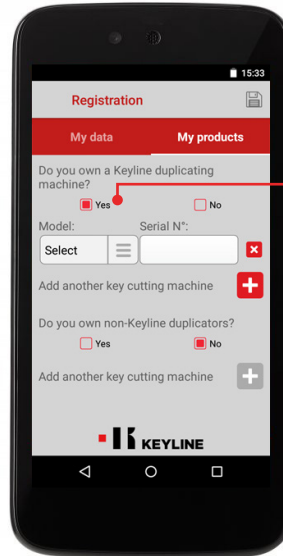
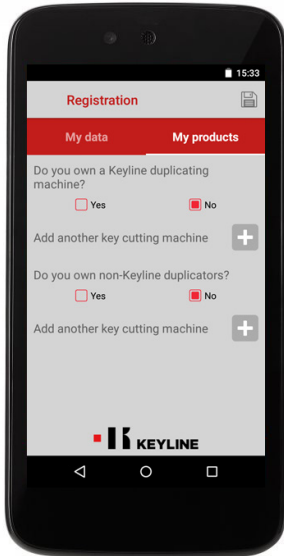
- a. Launch the program and press REGISTER to create a new account.



- b. Insert your data, then press NEXT or “My products” to access the “My products” section.

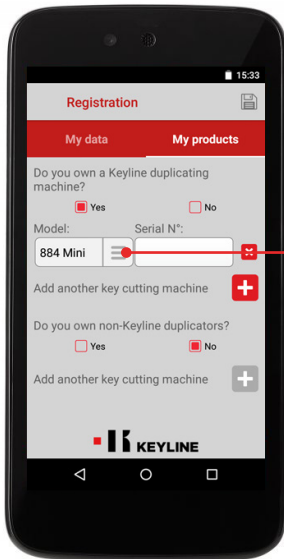


- c. Insert your products, selecting YES under the questions “Do you own a Keyline duplicating machine?” and/or “Do you own non-Keyline duplicators?”.

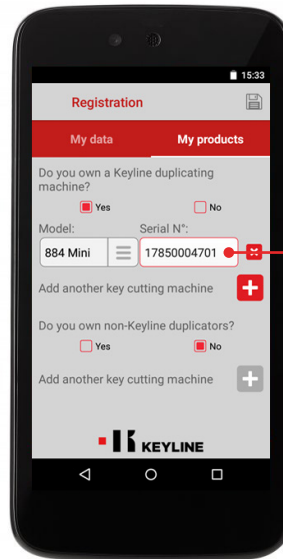


To insert the Keyline machines

- d. Select your machine from the drop-down menu, then insert the serial number.

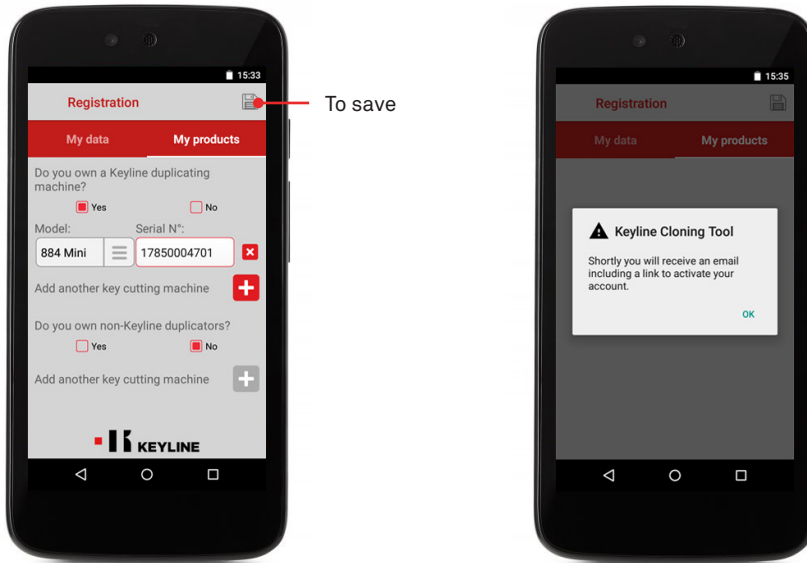


To select the machine

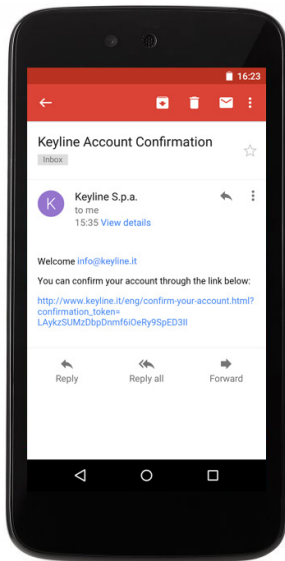


Insert here the serial number

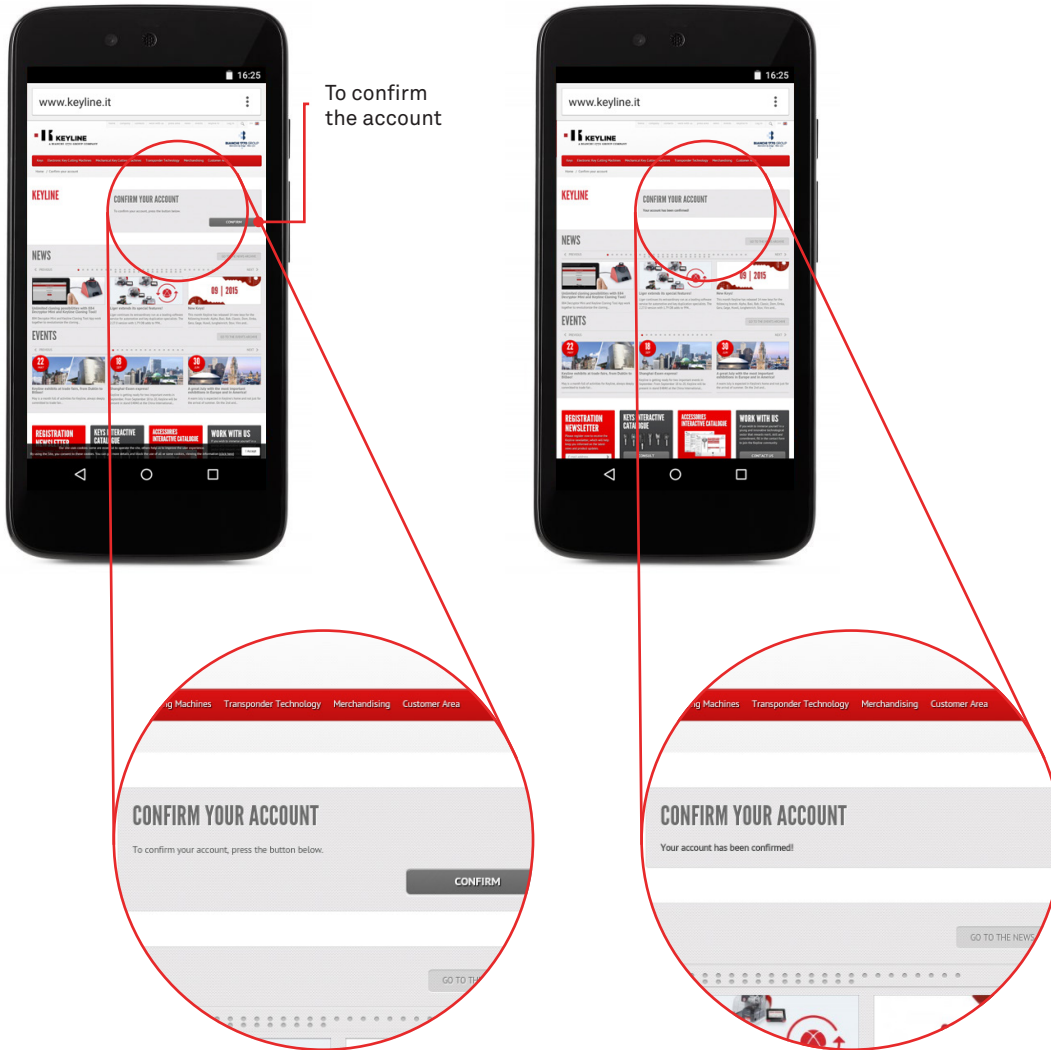
e. Click on the floppy disk icon to save the registration, then press OK.



e. Check your e-mail inbox and select the link that you will receive from Keyline.



f. Confirm your account.

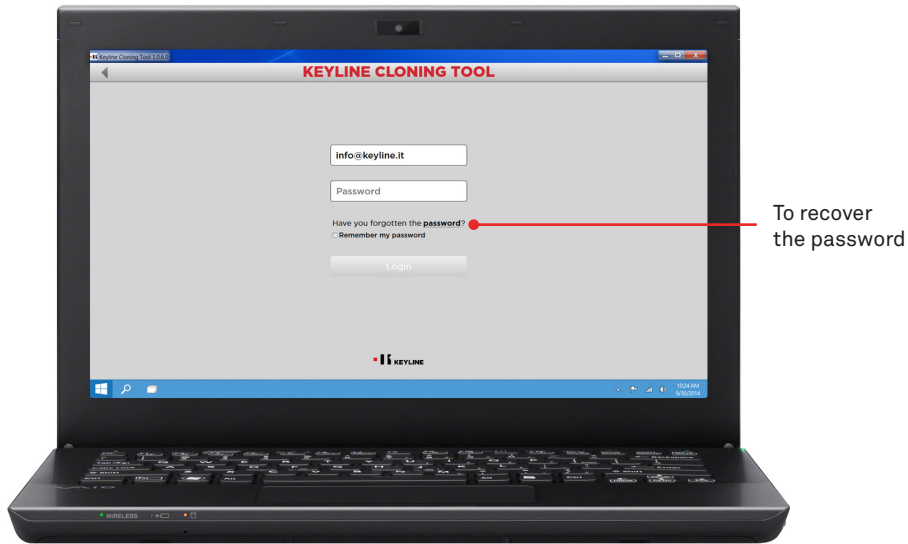


RECOVER PASSWORD

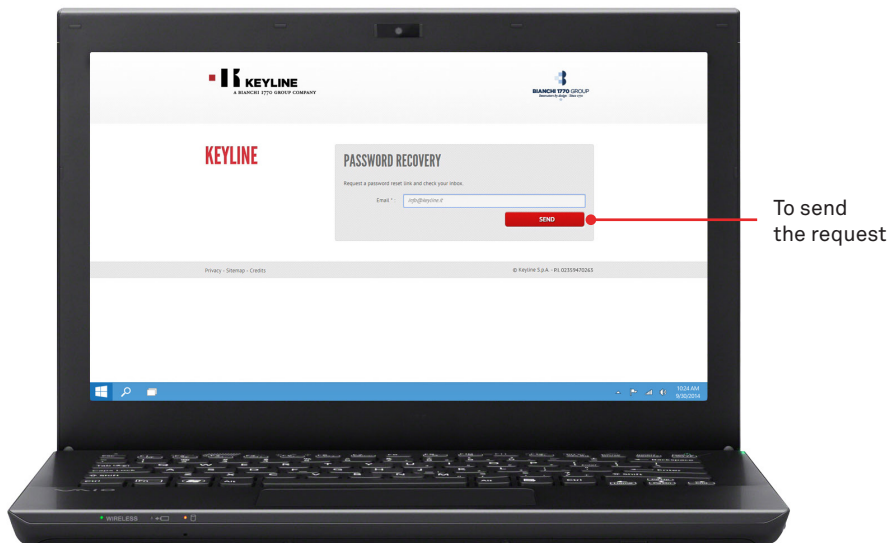
THROUGH THE PC

Procedure:

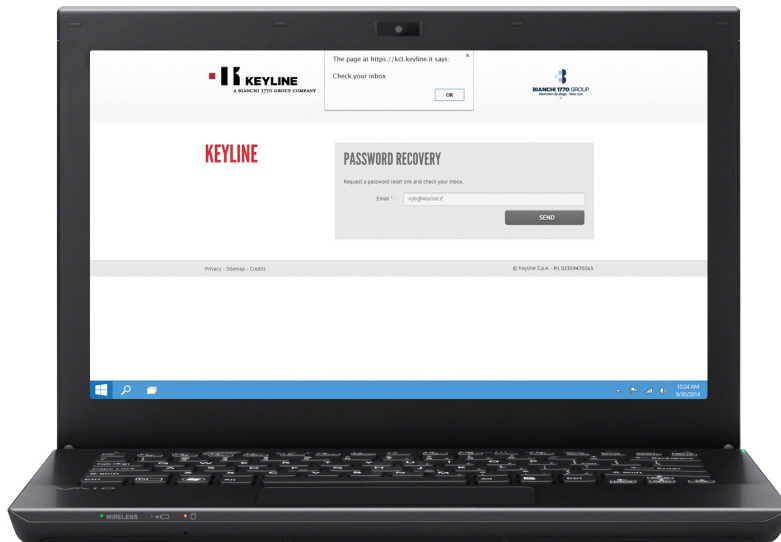
- a. Launch the program, click on LOGIN and press PASSWORD to recover the password.



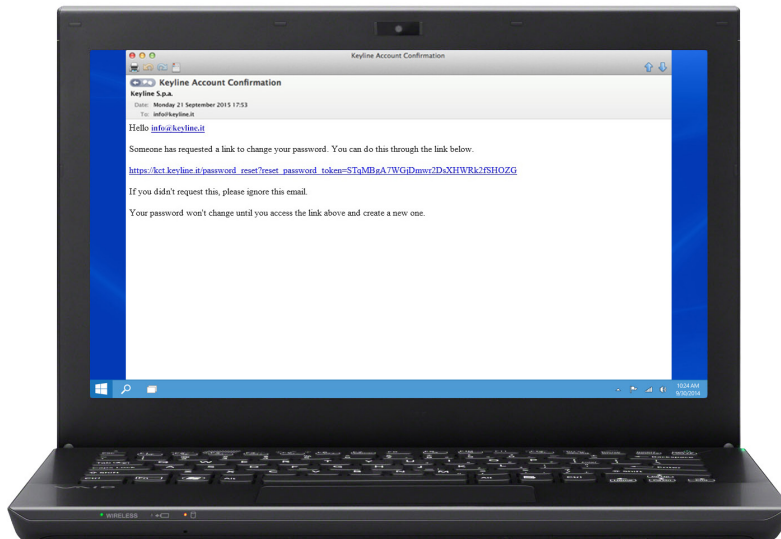
- b. Insert your email and press SEND.



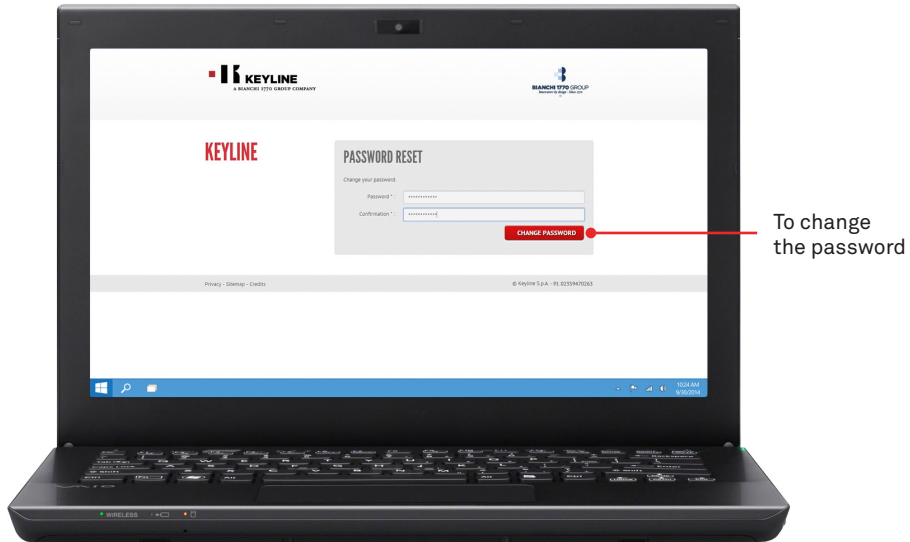
c. Press OK.



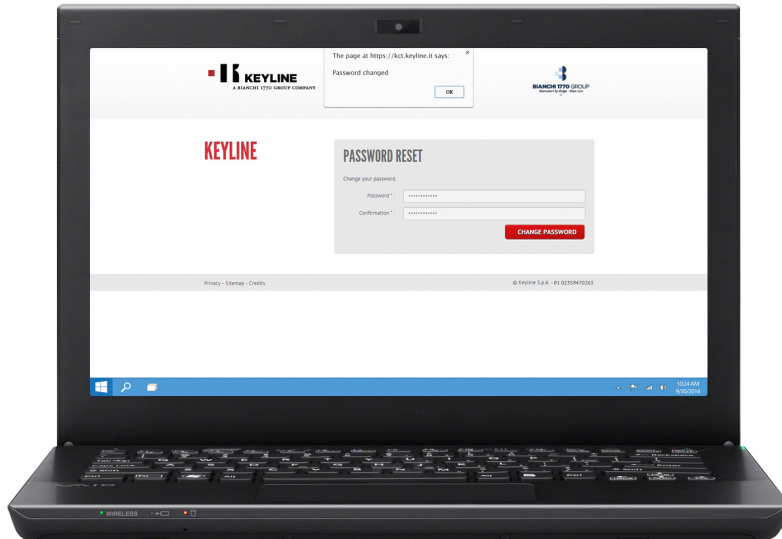
d. Check your e-mail inbox and select the link that you will receive from Keyline.



e. Insert the new password and click on CHANGE PASSWORD.



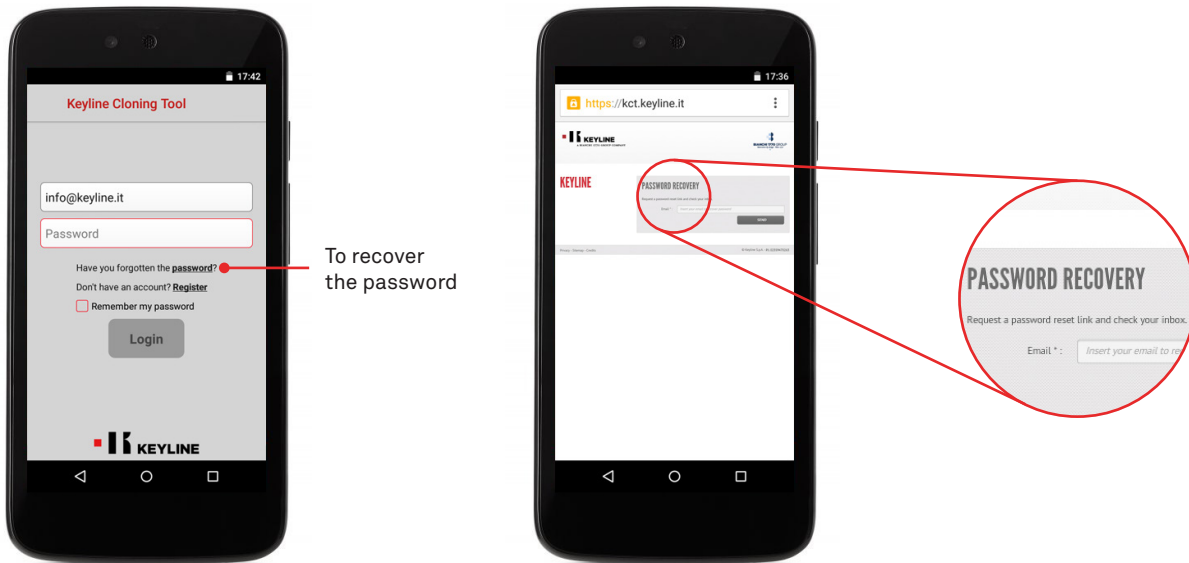
f. Press OK.



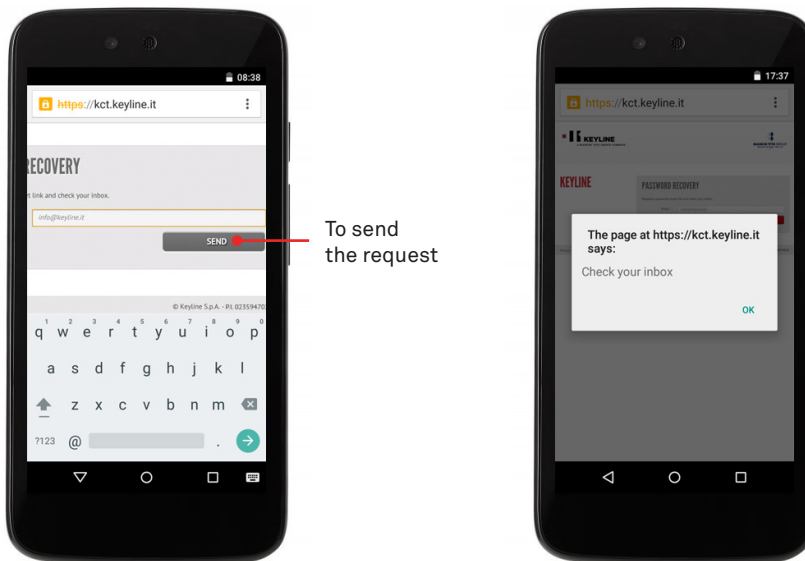
THROUGH THE APP

Procedure:

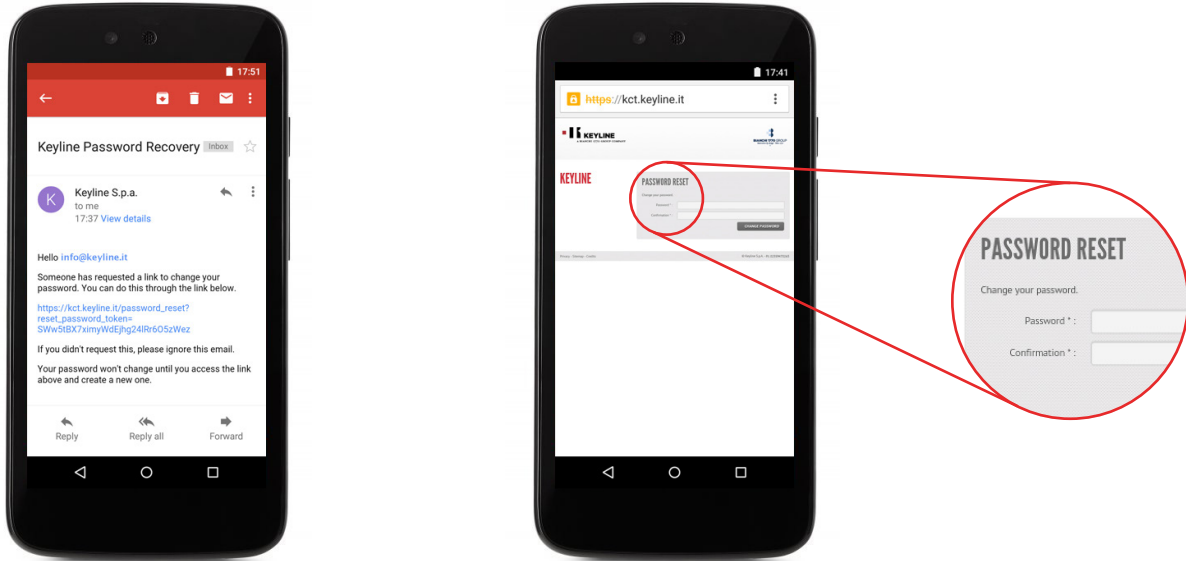
- a. Launch the program and press PASSWORD to recover the password.



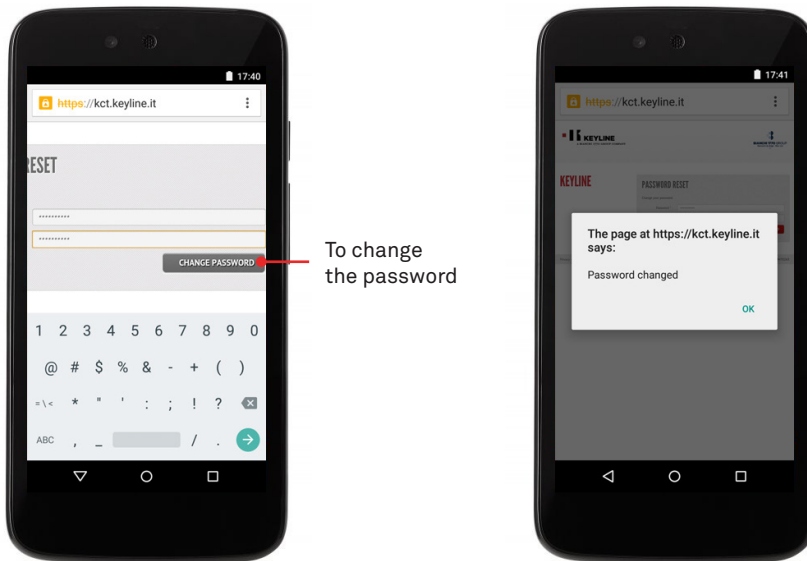
- b. Insert your email and send the request, then press OK.



c. Check your e-mail inbox and select the link that you will receive from Keyline.



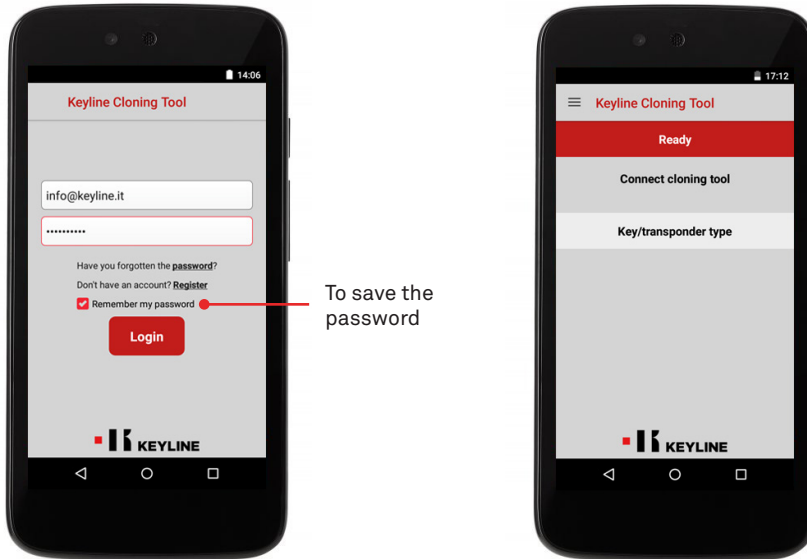
d. Insert the new password and click on CHANGE PASSWORD, then press OK.



CHECK THE SMARTPHONE / TABLET USB-OTG CAPABILITY

Procedure:

- a. Launch the program and log in to the App.



- b. Select DIAGNOSTICS from the left side slider menu, then check if your tablet has USB-OTG capability.



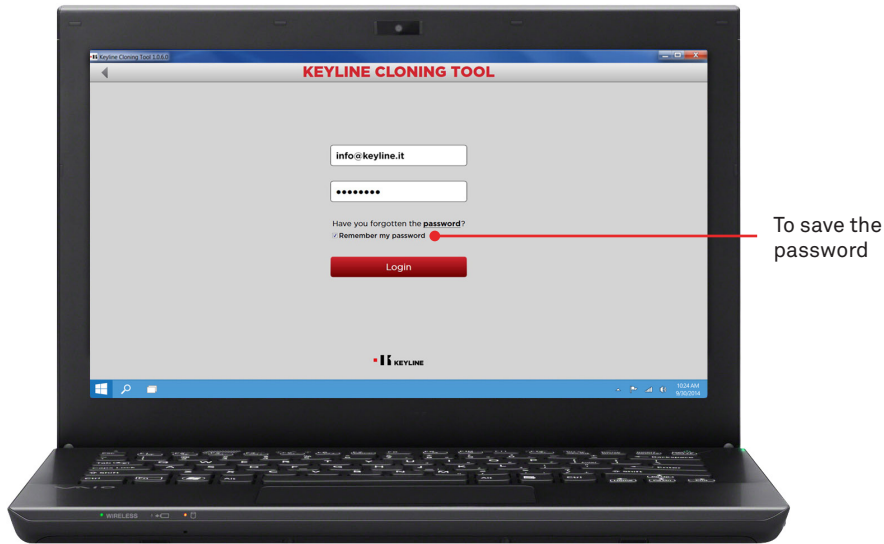
- c. It is also recommended to perform a final test to ensure the perfect connection for communication between the device and 884 Decryptor Mini.

LINK TO YOUR ACCOUNT

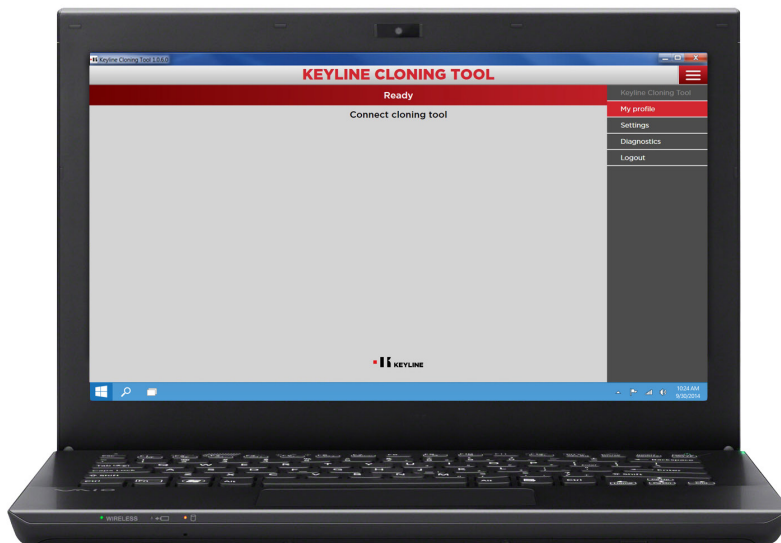
THROUGH THE PC

Procedure:

- a. Launch the program and log in to the software.



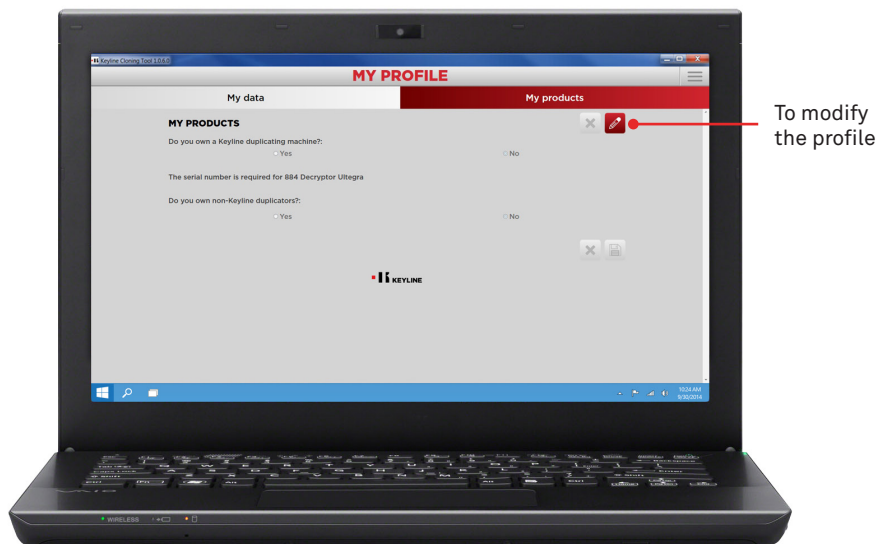
- b. Select MY PROFILE from the software drop-down menu.



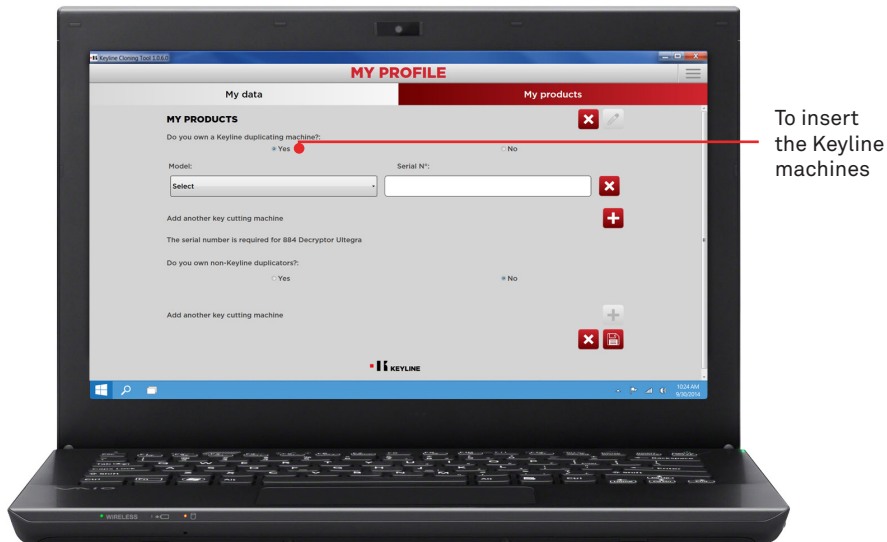
c. Access the “My products” section.



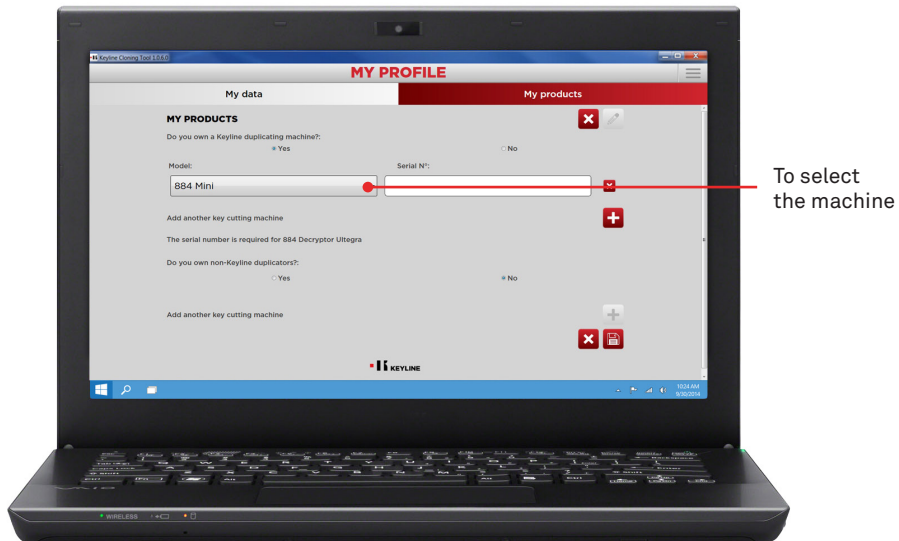
d. Click on the pencil icon.



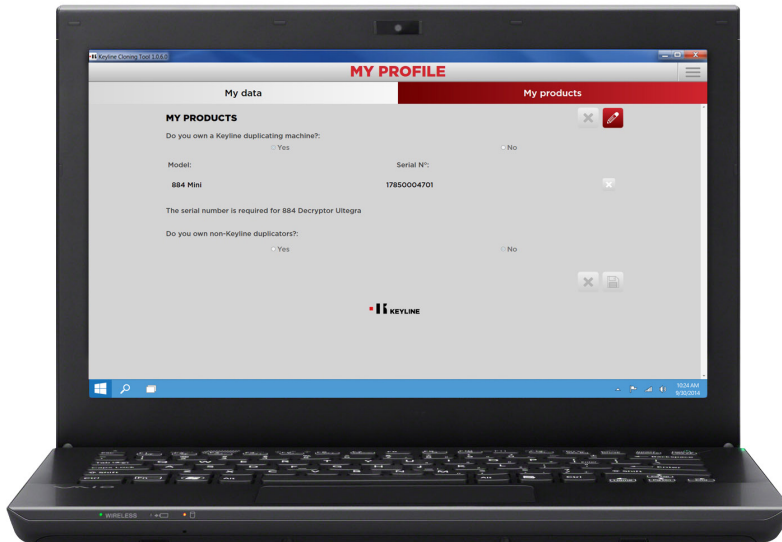
- e. Select YES under the question “Do you own a Keyline duplicating machine?”.



- f. Select 884 MINI from the drop-down menu.



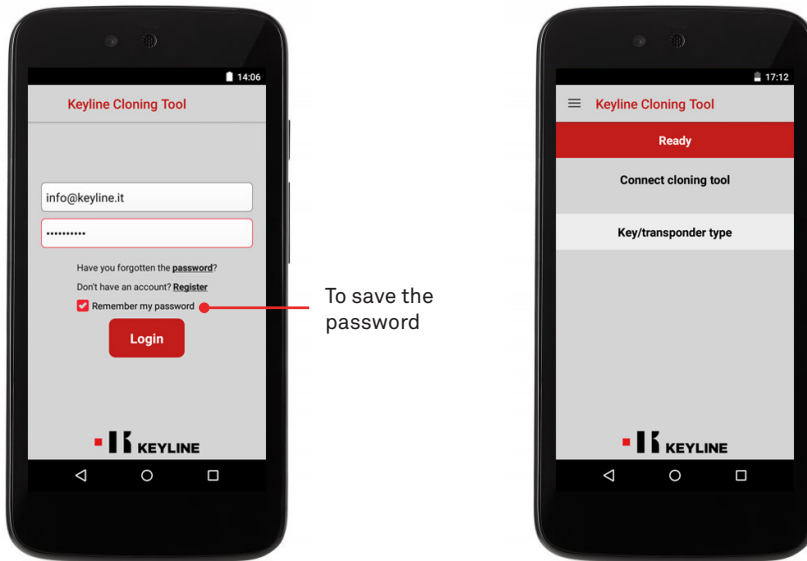
g. Insert the serial number, then click on the floppy disk icon to save the changes.



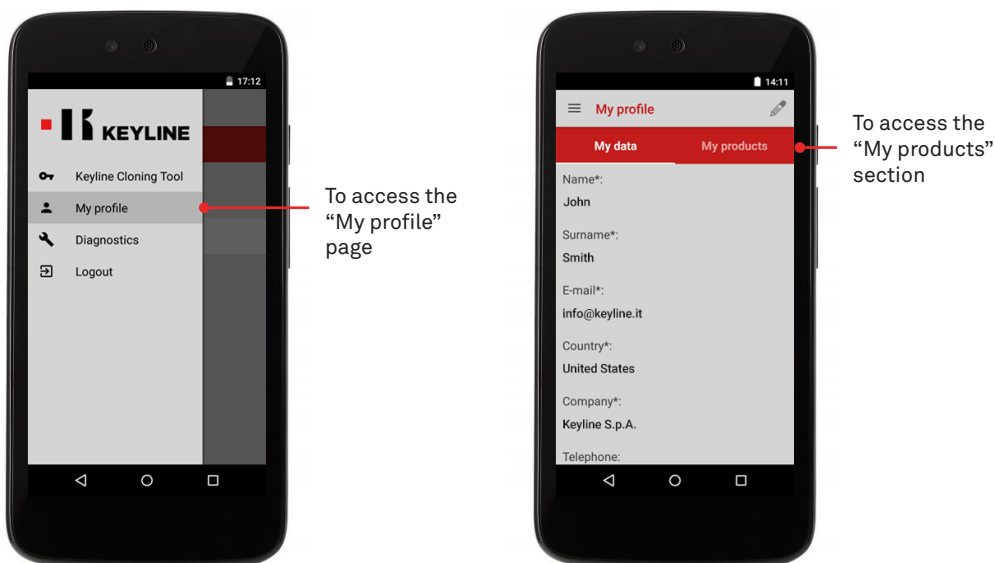
THROUGH THE APP

Procedure:

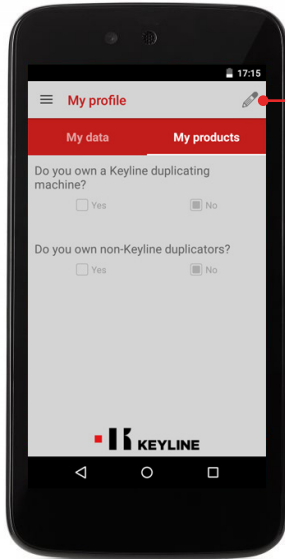
- a. Launch the program and log in to the App.



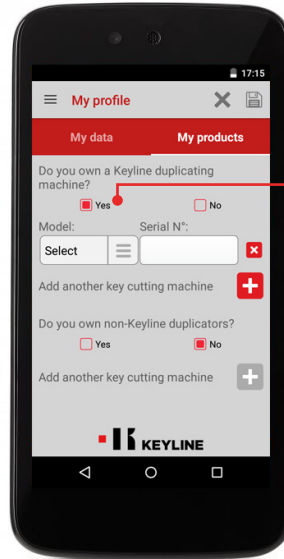
- b. Select MY PROFILE from the left side slider menu, then access the “My products” section.



- c. Click on the pencil icon and select YES under the question “Do you own a Keyline duplicating machine?”

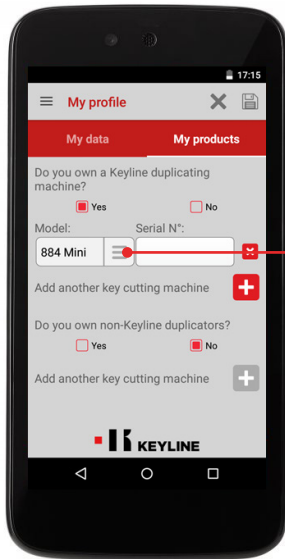


To modify the profile

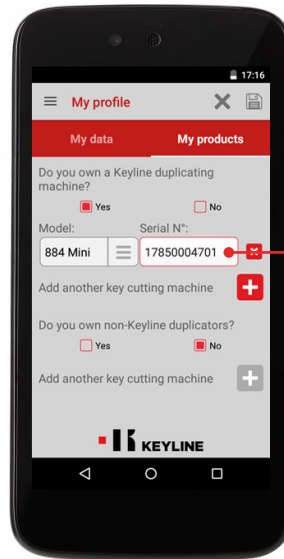


To insert the Keyline machines

- d. Select 884 MINI from the drop-down menu, then insert the serial number.

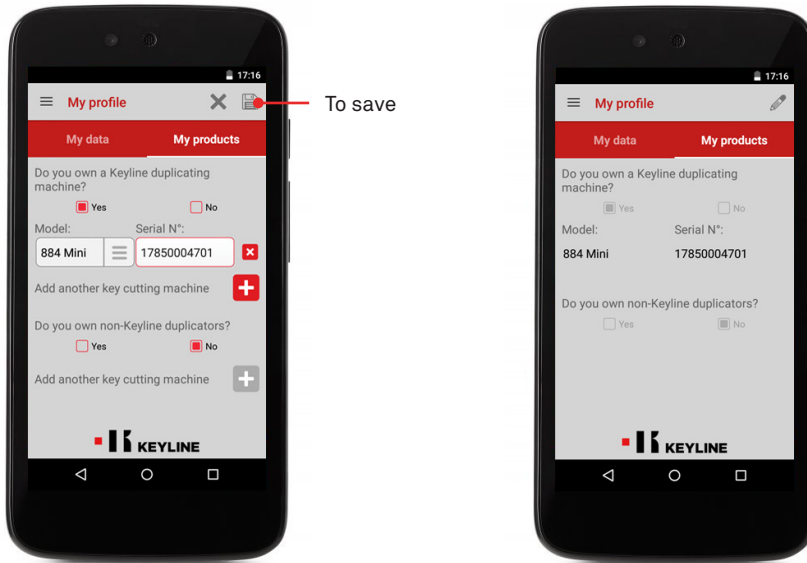


To select the machine



Insert here the serial number

e. Click on the floppy disk icon to save the changes.

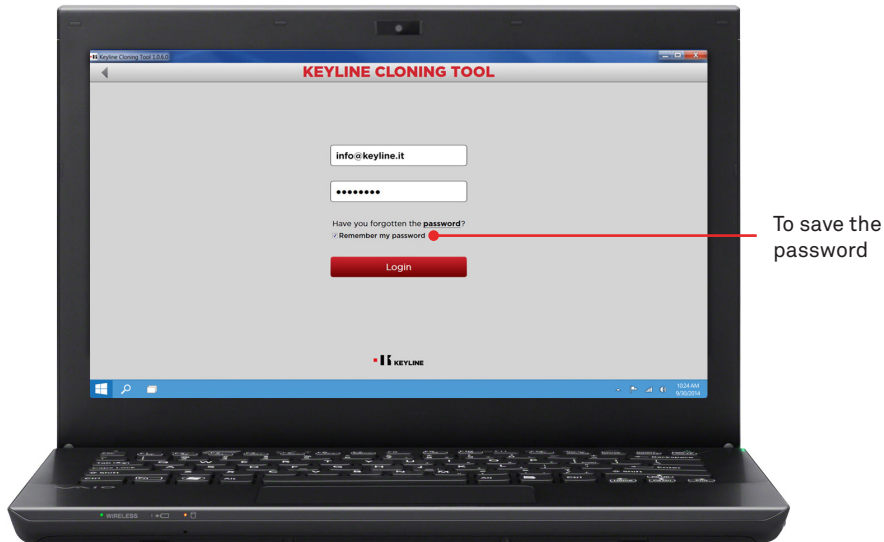


UNLINK TO YOUR ACCOUNT

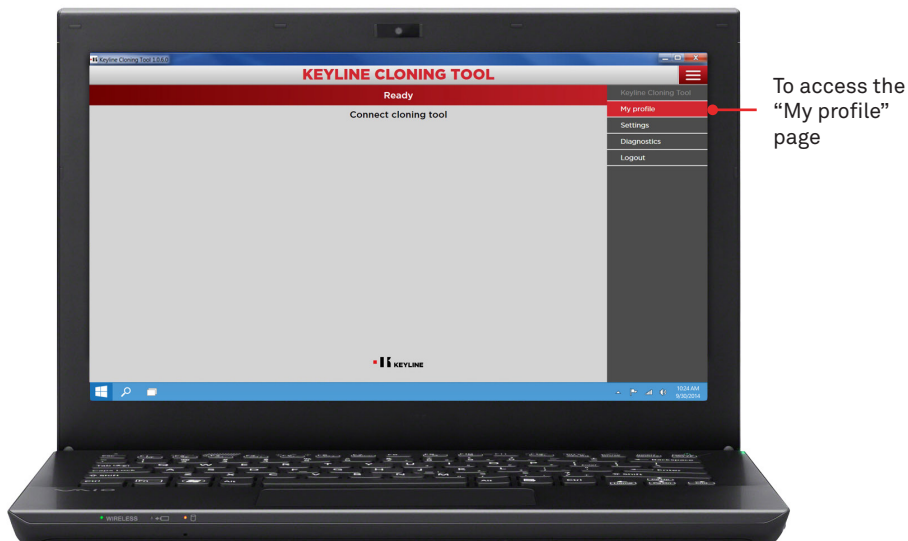
THROUGH THE PC

Procedure:

- a. Launch the program and log in to the software.



- b. Select MY PROFILE from the software drop-down menu.



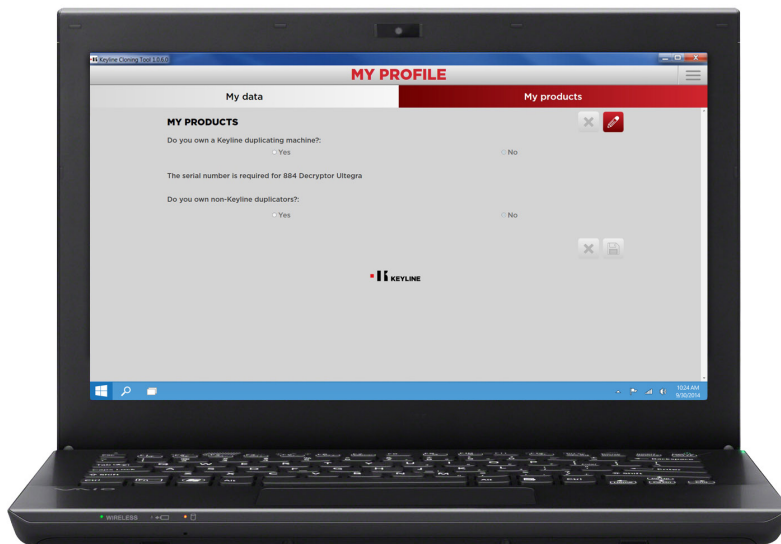
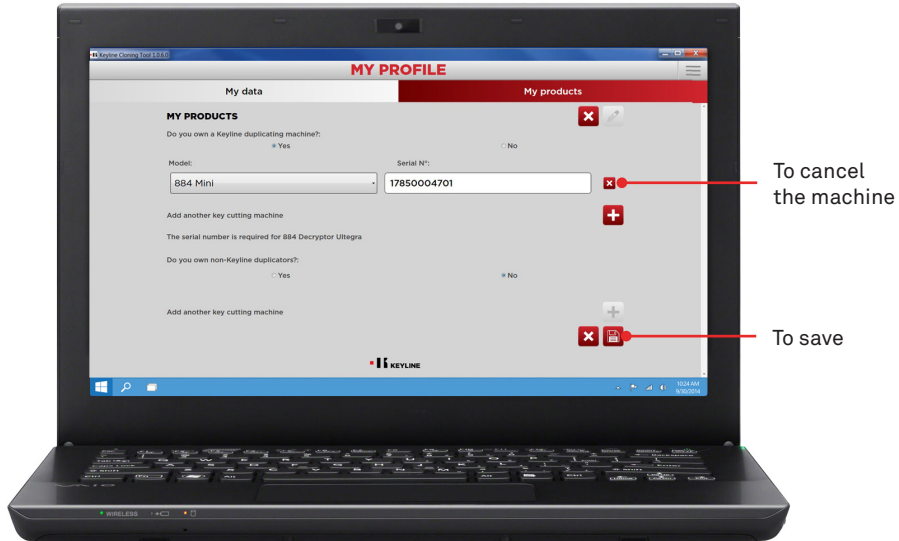
c. Access the “My products” section.



d. Click on the pencil icon.



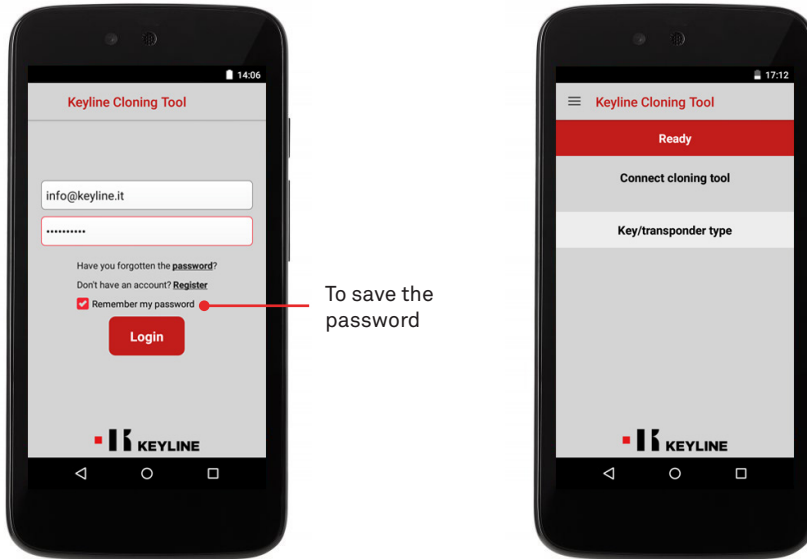
- e. Cancel the machine you want to unlink from your account by clicking on the “X” next to the serial number box, then click on the floppy disk icon to save the changes.



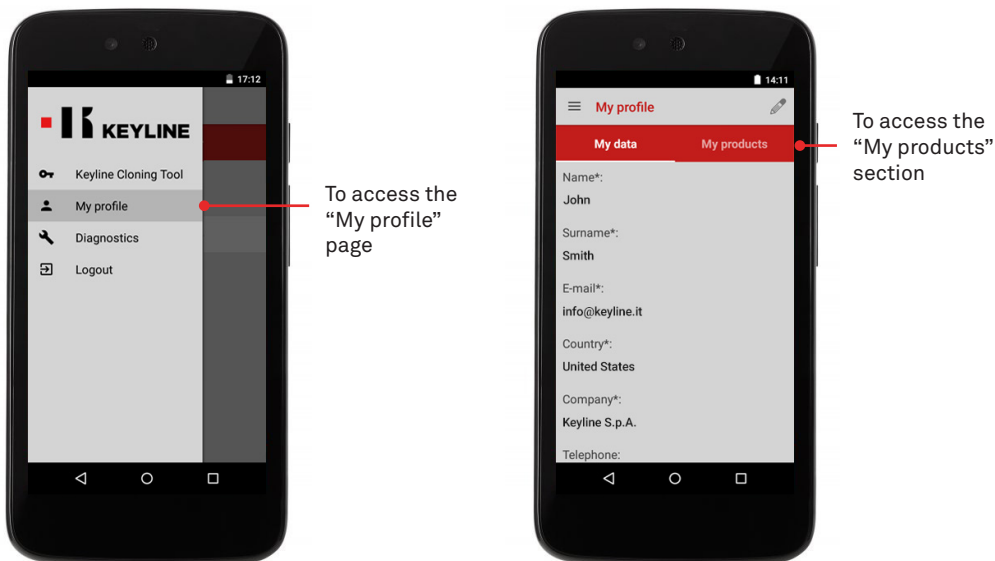
THROUGH THE APP

Procedure:

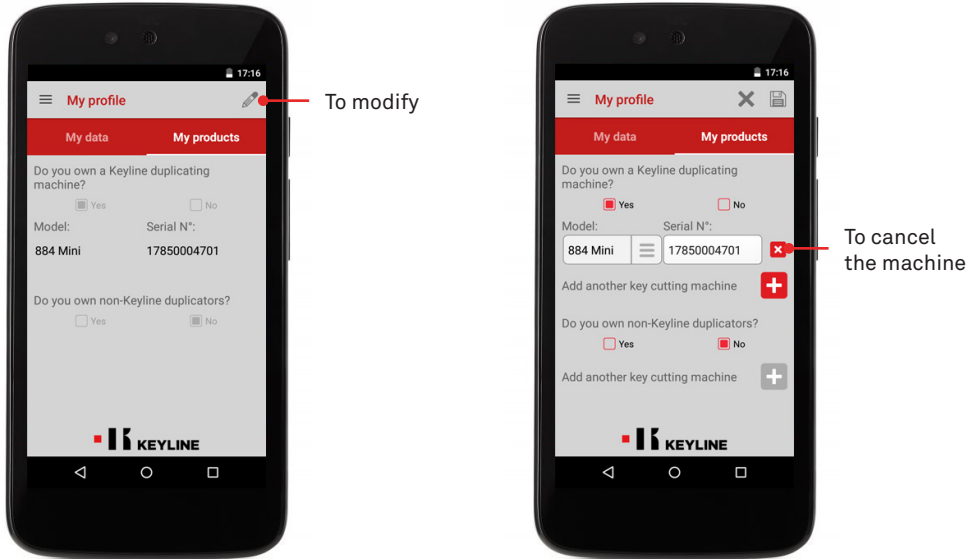
- Launch the program and log in to the App.



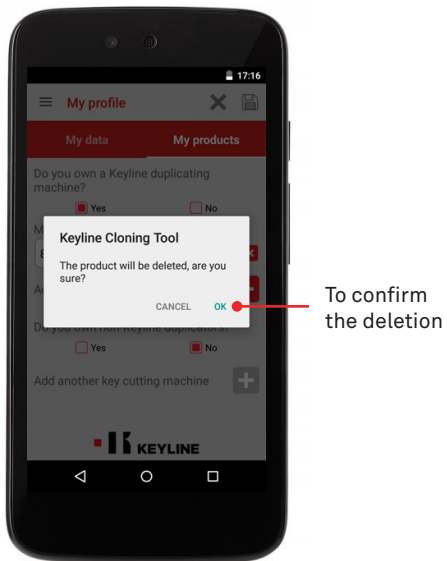
- Select MY PROFILE from the left side slider menu, then access the “My products” section.



- c. Click on the pencil icon and cancel the machine you want to unlink from your account by clicking on the “X” next to the serial number box.



- d. Click on OK to confirm that you want to cancel the machine from your account.



e. Click on the floppy disk icon to save the changes.

