



Innovators by design | Since 1770

A BIANCHI 1770 GROUP COMPANY

SOFTWARE KEYLINE CLONING TOOL **EEPROM XTRA**

Quick-Start Guide

CONTENTS

Creating a new original key by vehicle search

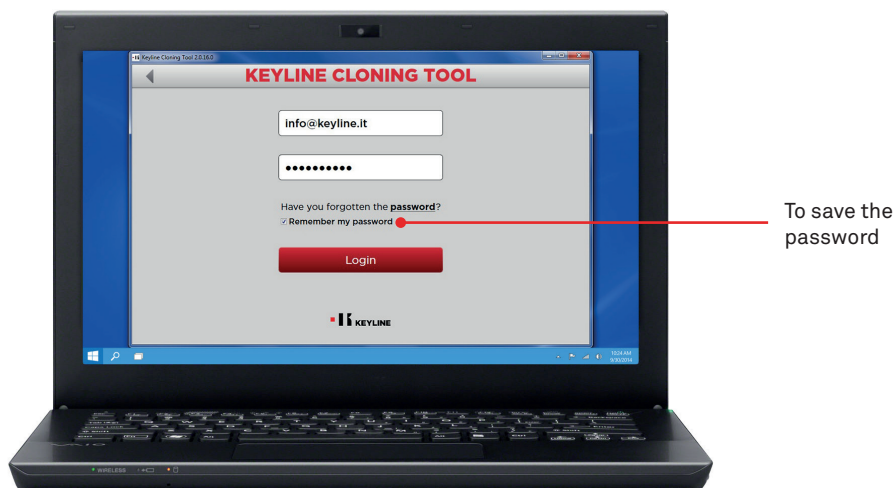
Creating a new original key by direct loading of the .bin file



CREATING A NEW ORIGINAL KEY BY VEHICLE SEARCH

Procedure:

- a. Launch the Keyline Cloning Tool program and LOG IN.



- b. Connect the Keyline 884 Decryptor Mini or 884 Decryptor Ultegra device with EEPROM Xtra. Kit to the PC.

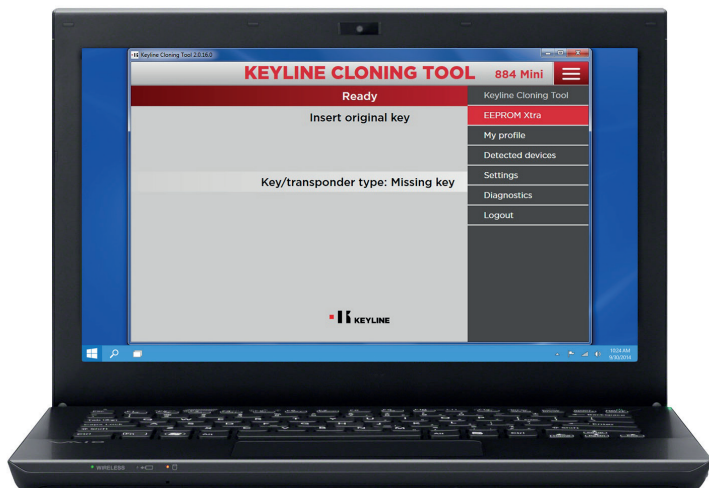
With 884 Decryptor Mini, connect the machine to a PC with the longer USB cable supplied.



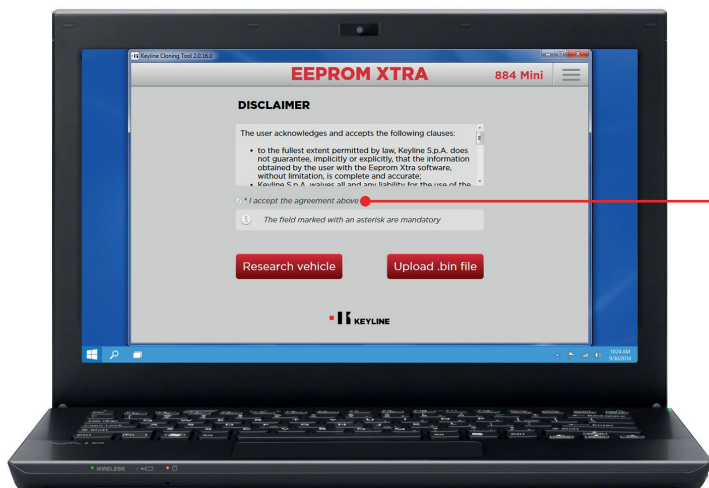
With 884 Decryptor Ultegra, instead, connect the machine to a PC with the relevant USB cable supplied and turn it on.



- c. Select EEPROM XTRA from the software drop-down menu.

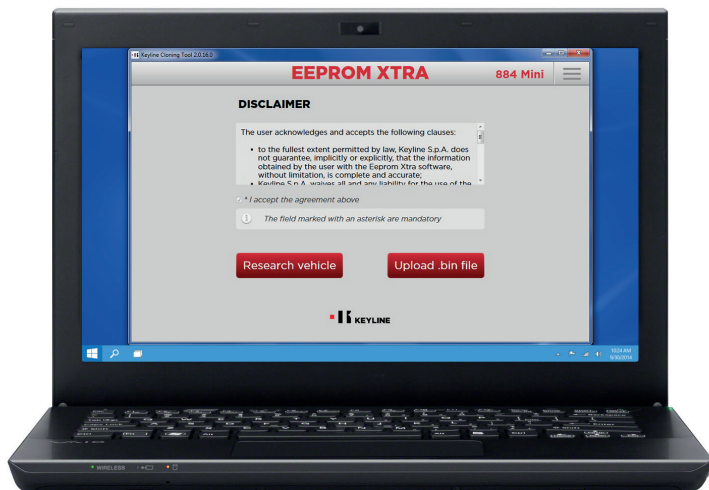


- d. Accept the Keyline **disclaimer** in order to be allowed to proceed. The disclaimer needs to be accepted only the first time.
EEPROM memory reading must be performed with the appropriate devices, easily available on the market, and is reserved for experienced professionals.
Keyline does not provide assistance for the acquisition phase of the .bin file. For additional information on paid training courses held by Keyline and its partners, please contact info@keyline.it



To accept the Keyline disclaimer

e. Click on the “Vehicle search” button.



f. Select the make, model and manufacturing year of the vehicle and press “Next”.



To start the search

g. Scroll through the gallery and identify the vehicle immobilizer (some vehicles may have more than one type of immobilizer).



To scroll through the available galleries

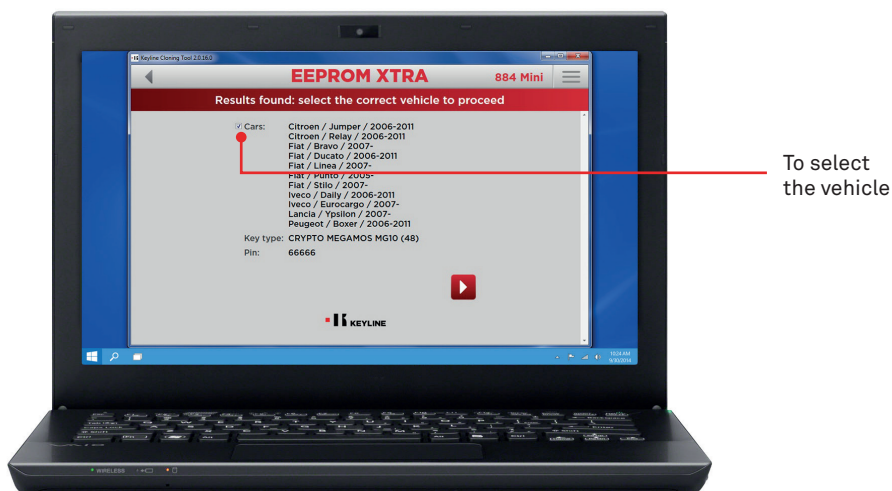
To enlarge the images

- h. Click on the “Upload .bin file” button and load the file with the .bin extension extracted from the vehicle EEPROM memory.

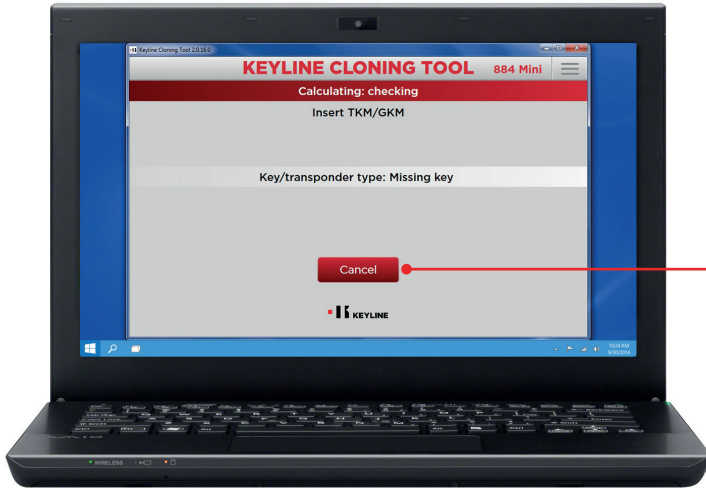


Useful hint: create a personal archive of .bin files in your PC, in order to be able to repeat the cutting process without having to access the vehicle again.

- i. Select the desired vehicle and click “Next”.



- j. Insert the required Keyline transponder (TK50/TK100/TKM/TKG electronic head or Micro Keyline CK50/GK100/CK100/GKM/CKG chip) in the cloning device and follow the steps shown by the software until the end of the data writing.



To cancel the data writing process

CREATING A NEW ORIGINAL KEY BY DIRECT LOADING OF THE .BIN FILE

Procedure:

- a. Launch the Keyline Cloning Tool program and LOG IN.



- b. Connect the Keyline 884 Decryptor Mini or 884 Decryptor Ultegra device with EEPROM Xtra. Kit to the PC.

With 884 Decryptor Mini, connect the machine to a PC with the longer USB cable supplied.



With 884 Decryptor Ultegra, instead, connect the machine to a PC with the relevant USB cable supplied and turn it on.



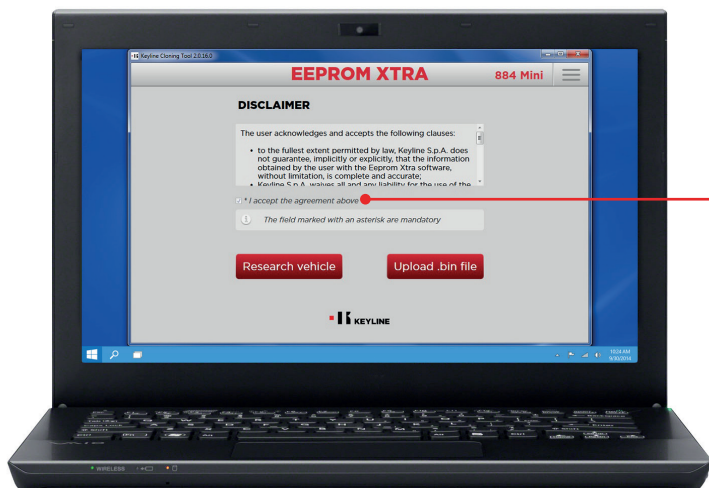
- c. Select EEPROM XTRA from the software drop-down menu.



- d. Accept the Keyline **disclaimer** in order to be allowed to proceed. The disclaimer needs to be accepted only the first time.

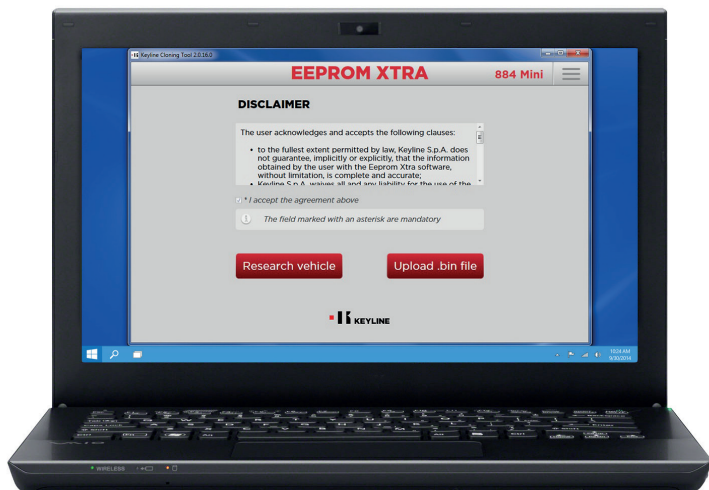
EEPROM memory reading must be performed with the appropriate devices, easily available on the market, and is reserved for experienced professionals.

Keyline does not provide assistance for the acquisition phase of the .bin file. For additional information on paid training courses held by Keyline and its partners, please contact info@keyline.it



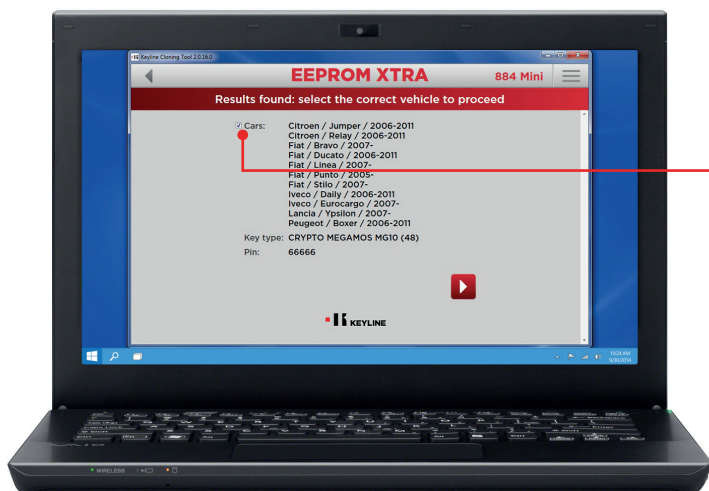
To accept
the Keyline
disclaimer

- e. Click on the “Upload .bin file” button and load the file with the .bin extension extracted from the vehicle EEPROM memory.



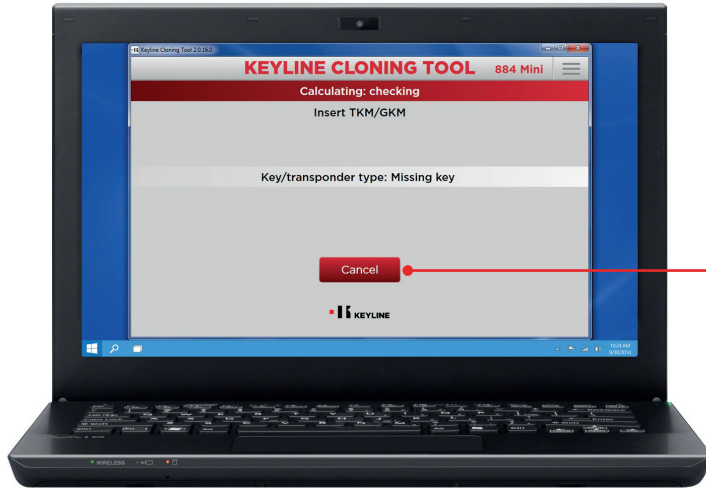
Useful hint: create a personal archive of .bin files in your PC, in order to be able to repeat the cutting process without having to access the vehicle again.

- f. Select the desired vehicle and click “Next”.



To select the vehicle

- g. Insert the required Keyline transponder (TK50/TK100/TKM/TKG electronic head or Micro Keyline CK50/GK100/CK100/GKM/CKG chip) in the cloning device and follow the steps shown by the software until the end of the data writing.



To cancel the data writing process